



11 Norman Close, Littlehampton BN17 6BY
£299,950 Freehold

**HAWKE &
METCALFE** 
INDEPENDENT ESTATE AGENTS

INDEPENDENT ESTATE & LETTING AGENTS

- Detached House
- Extended Accommodation
- 3 Bedrooms
- Spacious Lounge
- Dining Room
- Gas Central Heating
- G/F Bathroom/WC
- F/F Shower Room/WC
- Double Glazing

A spacious and extended detached house offering good size and versatile accommodation which in brief comprises: - entrance hall with built in cupboard, large lounge with sliding doors to double aspect dining room, modern fitted kitchen, bedroom one and three have access to a "Jack and Jill" shower room/WC and bedroom two. Outside there is a long private drive which provides off road parking for numerous vehicles and leads to a detached garage with up and over door and power/light. There is an enclosed, mainly paved west facing rear garden. Features include gas fired central heating and double glazing.

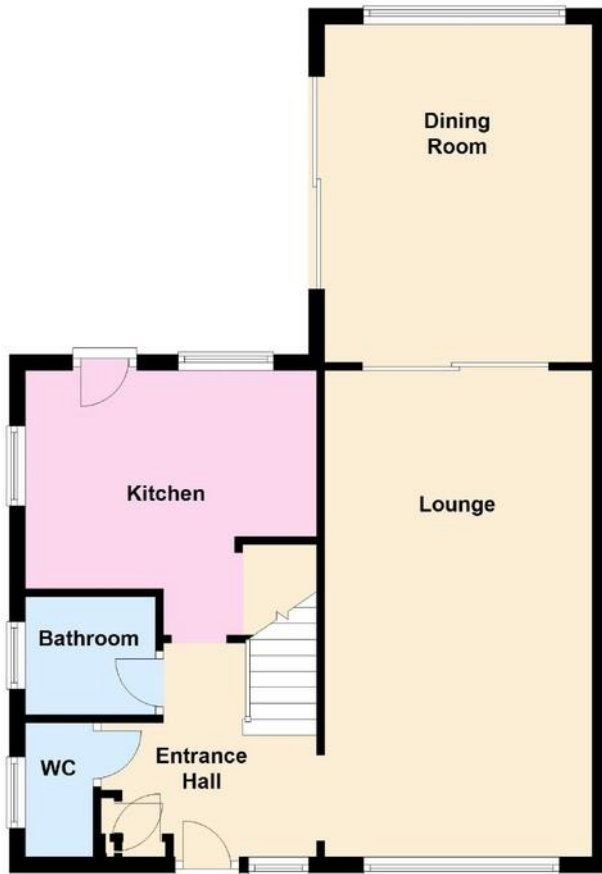
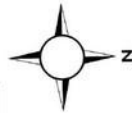
Norman Close is a quiet cul-de-sac location just to the north of Littlehampton town centre and is accessed from East Street, almost opposite Southfields Road.

We would strongly recommend viewing this house to appreciate the feeling of space and good size accommodation.



Ground Floor

Approx. 57.7 sq. metres (620.9 sq. feet)



Total area: approx. 100.6 sq. metres (1083.0 sq. feet)

First Floor

Approx. 42.9 sq. metres (462.1 sq. feet)



Entrance Hall

Cloakroom

Lounge

20' x 11' (6.10m x 3.35m)

Dining Room

13'10 x 10'10 (4.22m x 3.30m)

Kitchen

12' x 8'11 (3.66m x 2.72m)

Bathroom

Bedroom 1

11'11 x 10'2 (3.63m x 3.10m)

"Jack & Jill" Shower Room

Bedroom 2

11'5 x 9'7 (3.48m x 2.92m)

Bedroom 3

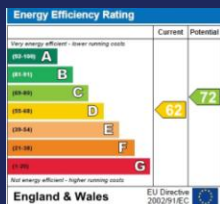
11'5 x 8'10 (3.48m x 2.69m)

Long Private Drive

Detached Garage

18'7 x 9' (5.66m x 2.74m)

West Rear Garden



01903 850450

**90 THE STREET, RUSTINGTON, LITTLEHAMPTON,
WEST SUSSEX, BN16 3NJ**
sales@hawkemetcalf.co.uk
www.hawkemetcalf.co.uk

